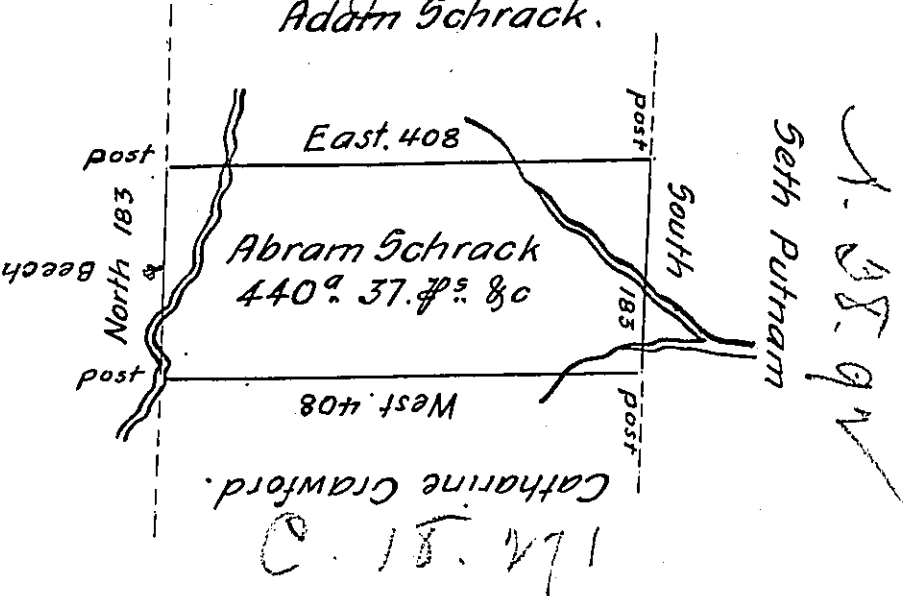


Page 191
Adam Schrack.

P-150
P-148



In Pursuance of a Warrant Dated August 21st 1793 Surveyed March 18th 1794 to Abraham Schrack the above described tract of land Situate on a small branch that empties into Susquehannah West of Salt Lick Creek in the County of Luzerne Containing four hundred & forty acres and thirty seven perches and allowance of 6 $\frac{7}{8}$ C^t.

Da^l. Brodhead Esq^r.
Surveyor Gen^l.

Anty. Grothers D.S.

IN TESTIMONY that the above is a copy of the original remaining on file in the Department of Internal Affairs of Pennsylvania, made conformably to an Act of Assembly approved the 16th day of February, 1833, I have hereunto set my Hand and caused the Seal of said Department to be affixed at Harrisburg, this thirteenth day of December 1906

Isaac R. Brown
Secretary of Internal Affairs.